

The aim of this study is to validate a rapidly reconfigurable null-test using a Hartmann pattern as target. The image of reflected light from a spherical reference sphere is used to test the capability of the corneal surface characterization method. A integration method is used to derive the shape of the reflective surface using a reflective spherical reference surface as a corneal simulator. Reconstruction using the trapezoid rule offers an easy solution as is shown in refs [1-3]. Measurements are performed on 4 healthy subjects' eyes.

Introduction

The anterior corneal surface provides about 80% of the total dioptric power of the human eye. Traditionally, corneal topography has been studied by commercial Topographers who mostly rely on the Plácido disc. A possible limitation of this system is the ambiguity of data in azimuthal direction. For that reason, recently it has been developed new generations of Topographers that use a different principle.

Objectives

According to the theory developed with the null screen method [1-3], an experimental setup based on the null-test using Hartmann pattern is proposed, which, allow us to evaluate the corneal surface guaranteeing a good efficiency and sufficient resolution in the optical parameters required.

Methodology

According to the theory developed with the null screen method [1-3], an experimental setup based on the null-test using Hartmann pattern is proposed, which, allow us to evaluate the corneal surface guaranteeing a good efficiency and sufficient resolution in the optical parameters required.

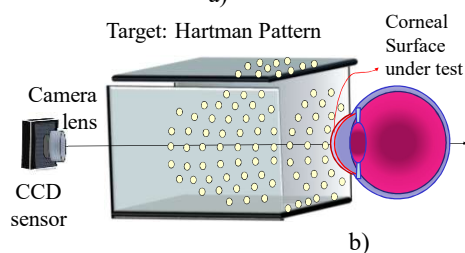
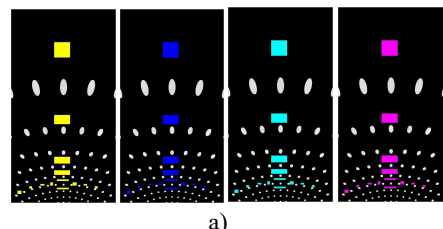


Fig. 1. a) Patterns of Hartmann [2], b) Schematic setup of Corneal Topographer.

Experimental setup

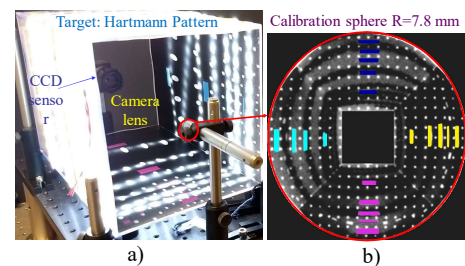


Fig. 2: a) Experimental setup, b) glass sphere ball under test representing the corneal surface.

Imaging Processing

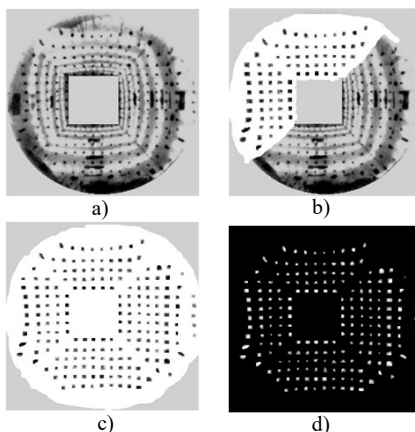


Fig. 3. Imaging Processing: a) Best Contrast, b) first segmented image, c) Final segmented imaging, d) Thresholding imaging.

Experimental results

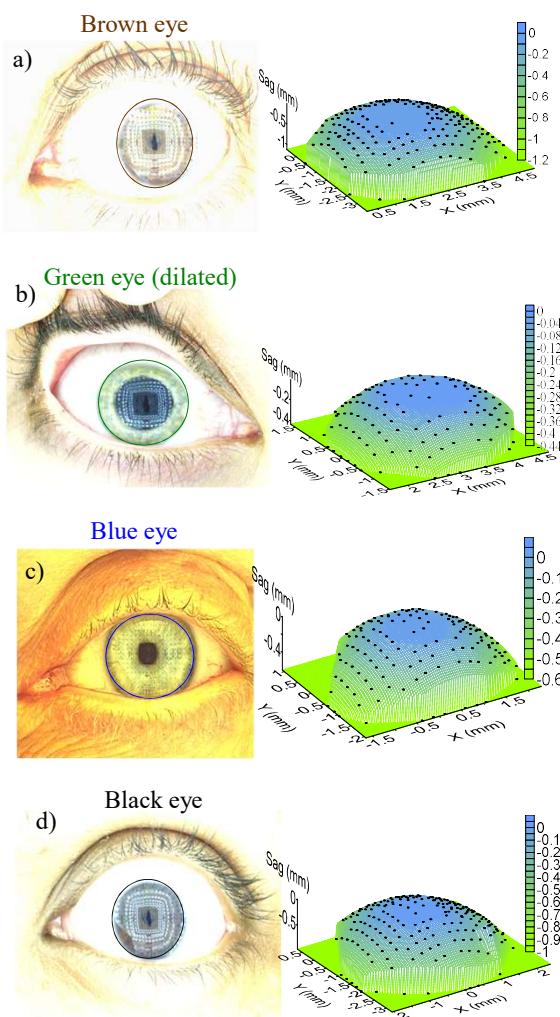


Fig. 4. Measurements of shape corneal surfaces performed on 4 healthy subjects' eyes: a) Subject 1, b) Subject 2, c) Subject 3, d) Subject 4.

Topography Maps of a glass sphere ball

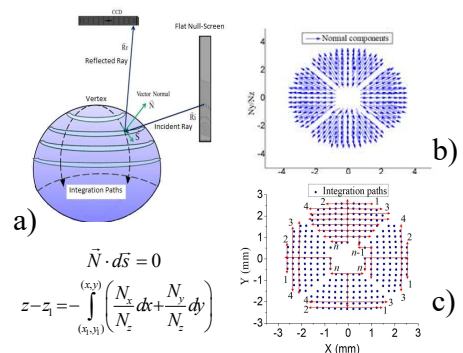


Fig. 5. Integration method by deflectometry technique [1, 2].

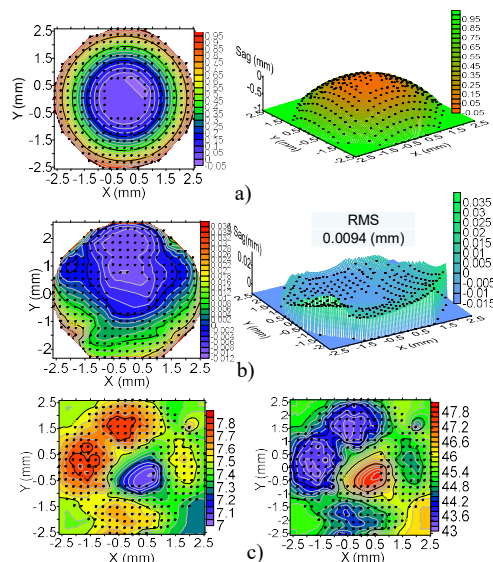


Fig. 6. Results of calibration sphere: a) Shape of the surface, b) Elevation Maps by Sagitta Differences, c) Curvature Radii and Dioptric Power [3].

Conclusions

The quantification of the corneal surface is of great importance in clinical and research applications of relevance for refractive corrections and the diagnosis and monitoring of corneal ectasias and keratoconus.

A rapidly reconfigurable and low-cost system with reconfigurable parameters as demonstrated here may suffice for corneal reconstruction.

References

- [1]- Rufino Díaz-Urbe, "Medium precision null screen testing of off-axis parabolic mirrors for segmented primary telescope optics; the case of the Large Millimetric Telescope", *Appl. Opt.*, 39 (2000).
- [2]- M. I. Rodríguez-Rodríguez, A. Jaramillo-Núñez, and Rufino Díaz-Urbe, "Dynamic point shifting with null screen using three LCDs as targets for corneal topography", *Appl. Opt.*, 54 6698-6710 (2015).
- [3]- Amilcar. Estrada-Molina, M. Campos-García, and Rufino Díaz-Urbe, "Sagittal and meridional radii of curvature for a surface with symmetry of revolution by using a null-screen testing method", *Appl. Opt.*, 52 625-634 (2013).